



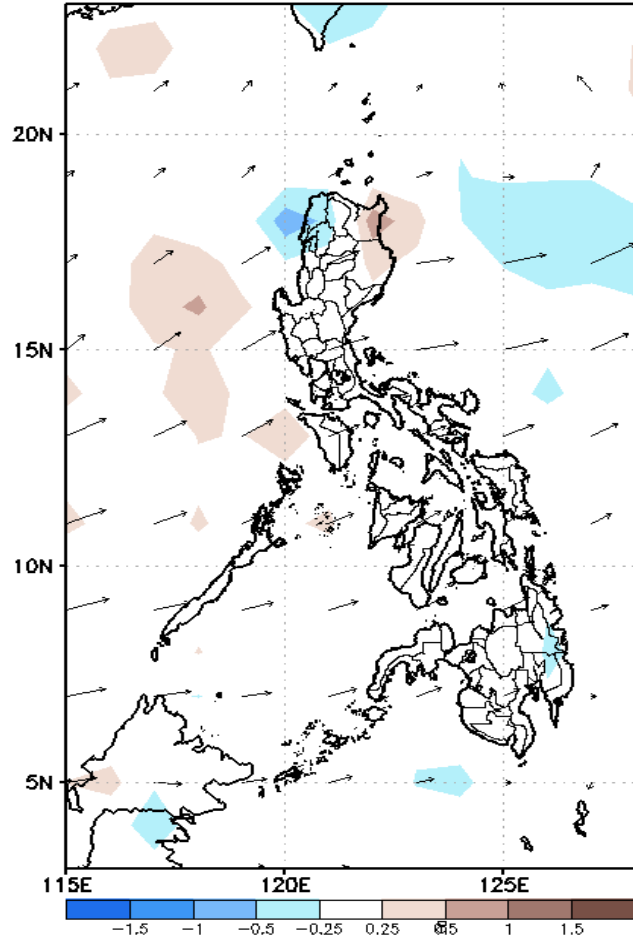
Week 1 & Week 2 Forecast for the Philippines using GEFS Model



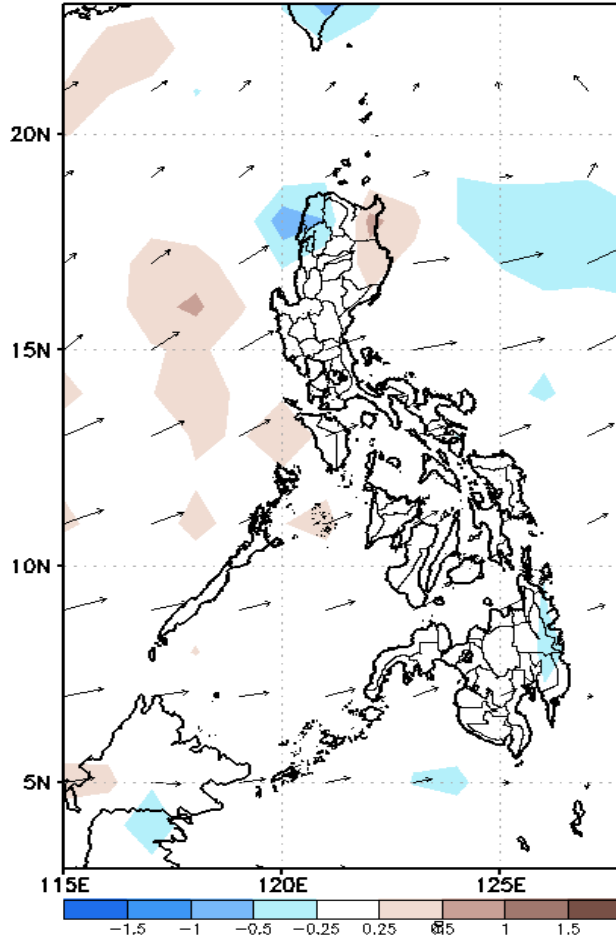
GEFS Week-1 Forecasts: Divergence & Wind Anomaly

Week 1: Nov 2-8, 2020

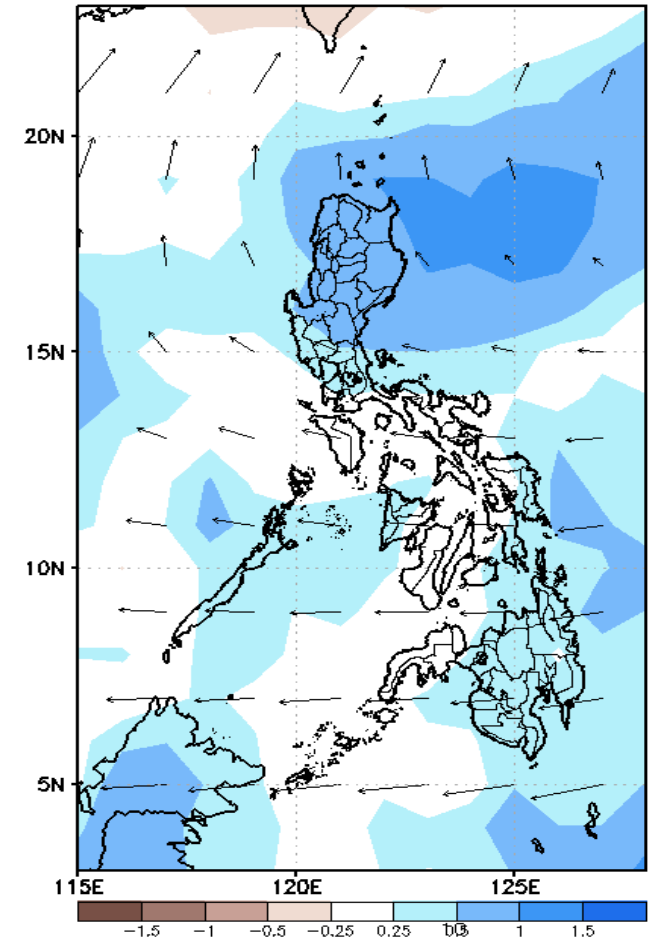
GEFS Week-1 850-hPa Divergence and Wind Anomc
Valid: 20201102 - 20201108



GEFS Week-1 700-hPa Divergence and Wind Anomr
Valid: 20201102 - 20201108



GEFS Week-1 200-hPa Divergence and Wind Anom
Valid: 20201102 - 20201108



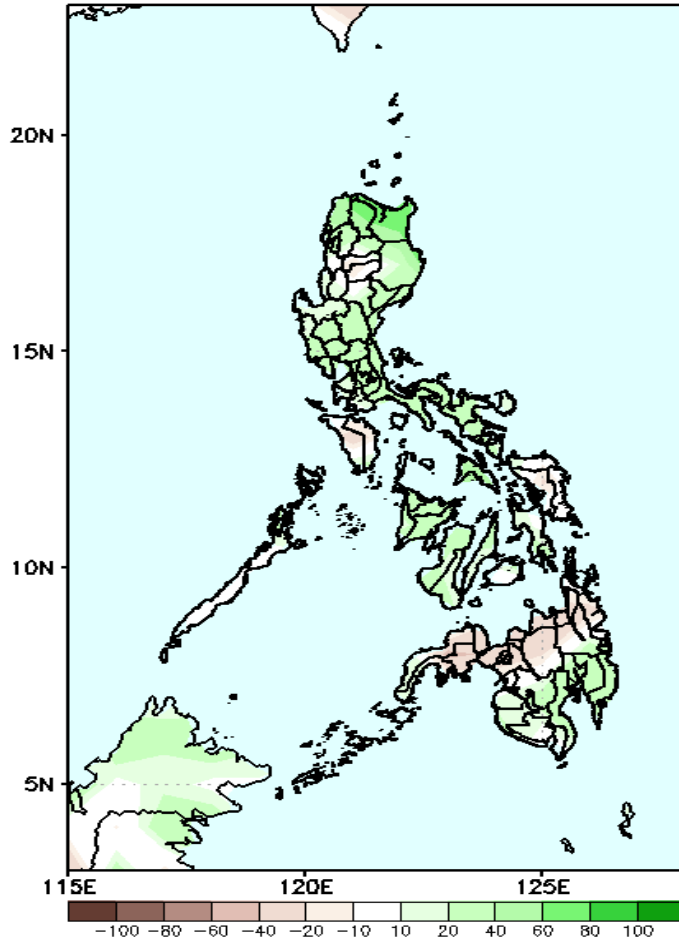
Upper level (200hPa) Divergence suggest likelihood of precipitation in most parts of Luzon and Mindanao. Southwest windflow affecting western Visayas and Mindanao. Northeast windflow affecting northern Luzon while easterlies affecting the remaining parts of the during the forecast period.



Precipitation Anomaly and Exceedance Probability > 25/50 mm

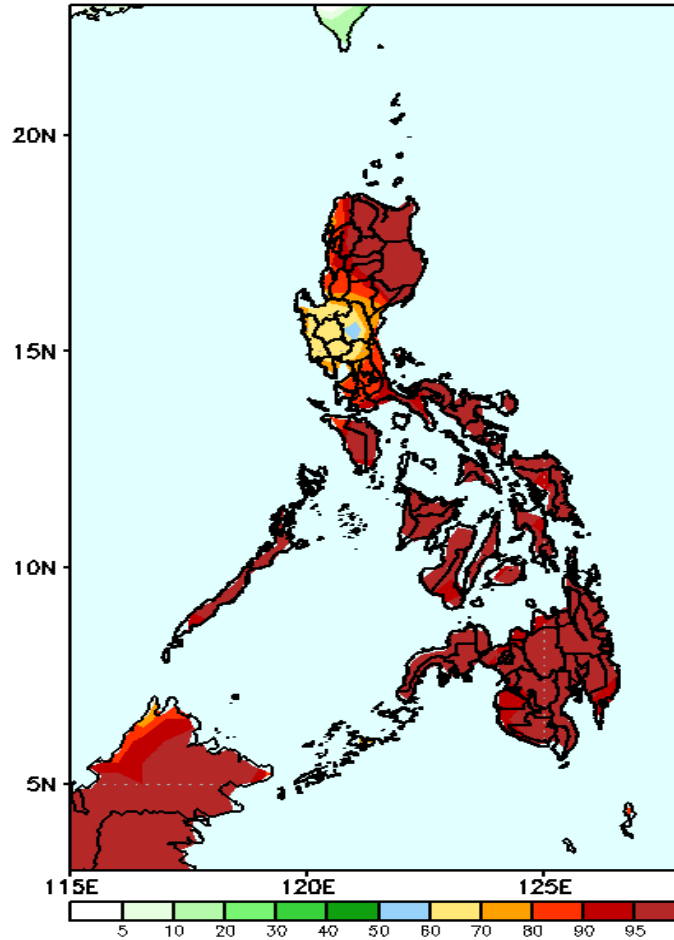
Week 1: Nov 2-8, 2020

GEFS Week-1 Precip Anomaly
Valid: 20201102 - 20201108



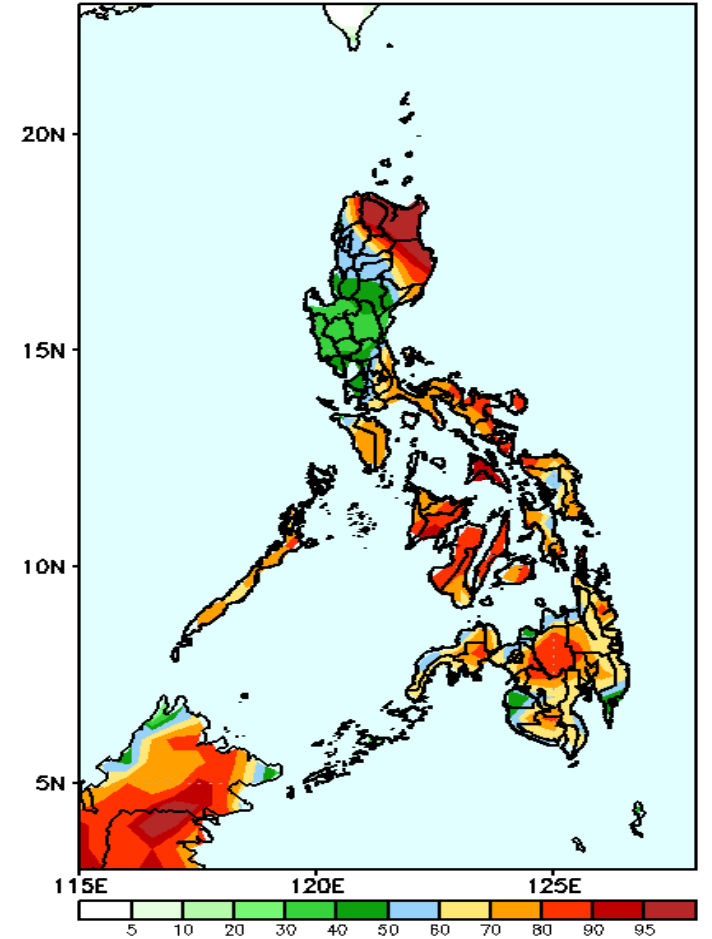
Increase of rainfall of 40-80mm in most parts of Luzon is expected while rainfall deficit of up to 40mm in northern Mindanao during the forecast period.

GEFS Week-1 Exceedance Prob. > 25mm
Valid: 20201102 - 20201108



High probability of rainfall to exceed 25mm in most parts of the country is expected during the forecast period.

GEFS Week-1 Exceedance Prob. > 50mm
Valid: 20201102 - 20201108



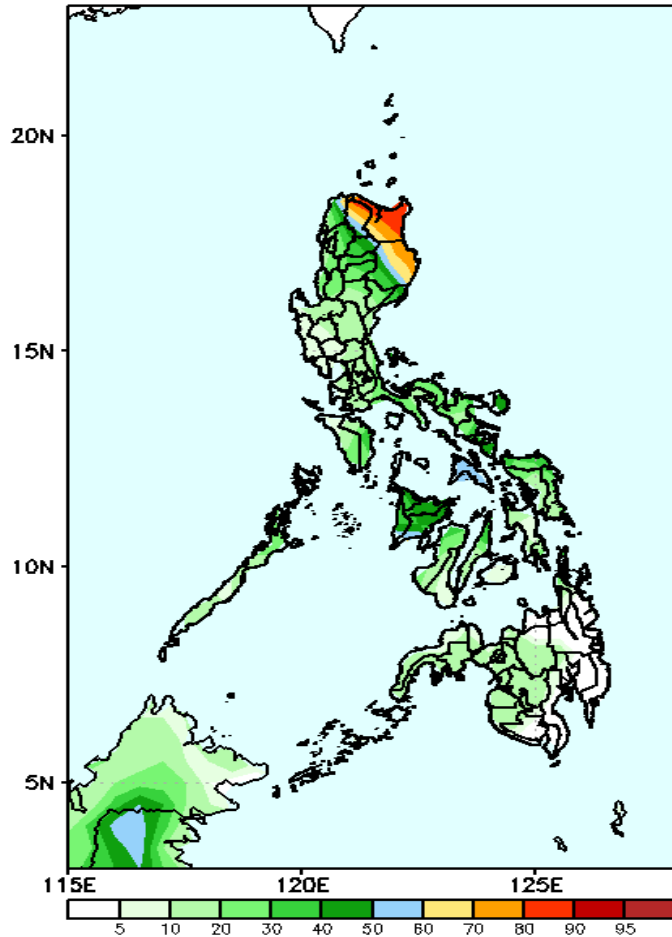
High probability of rainfall to exceed 50mm in most parts of the country except in central and southern parts of Luzon during the forecast period.



Exceedance Probability > 100/150/200 mm

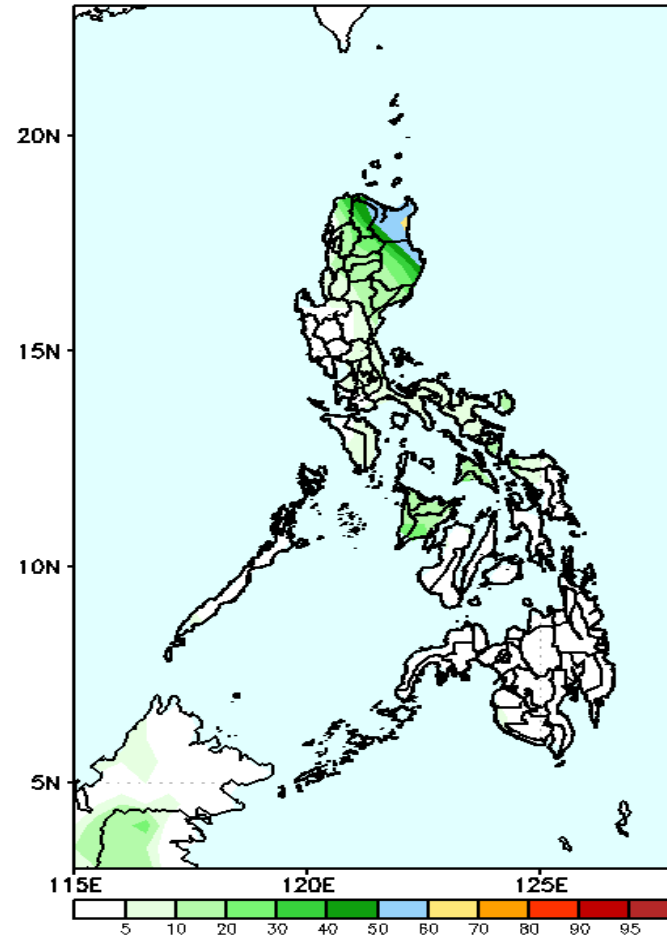
Week 1: Nov 2-8, 2020

GEFS Week-1 Exceedance Prob. > 100mm
Valid: 20201102 - 20201108



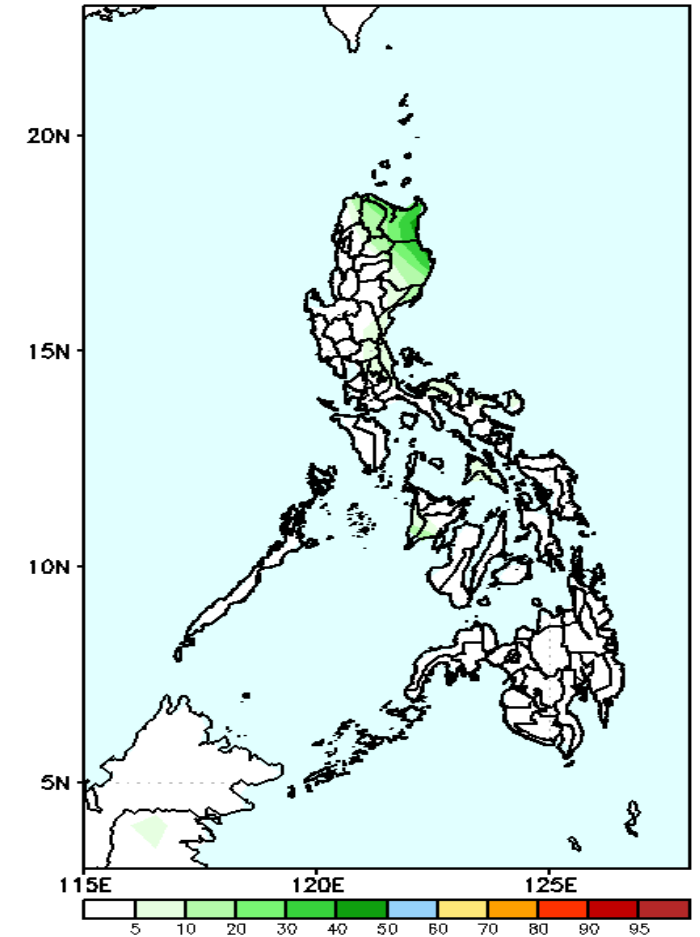
High probability of rainfall to exceed 100mm in Apayao, Cagayan and Isabela while less likely for the rest of the country during the forecast period.

GEFS Week-1 Exceedance Prob. > 150mm
Valid: 20201102 - 20201108



Less probability of rainfall to exceed 150mm in most parts of the country during the forecast period.

GEFS Week-1 Exceedance Prob. > 200mm
Valid: 20201102 - 20201108

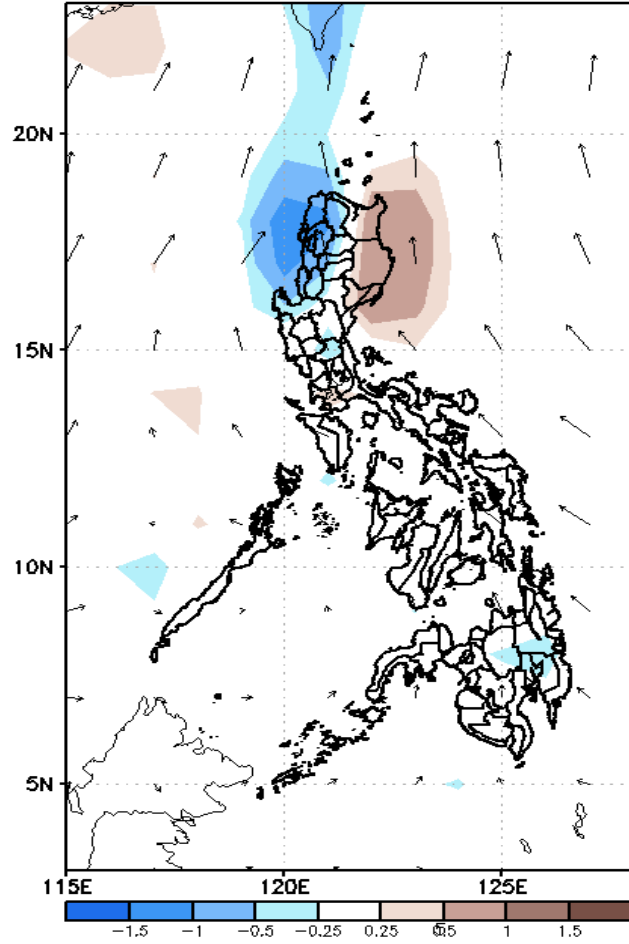


Less probability of rainfall to exceed 200mm in most parts of the country during the forecast period.

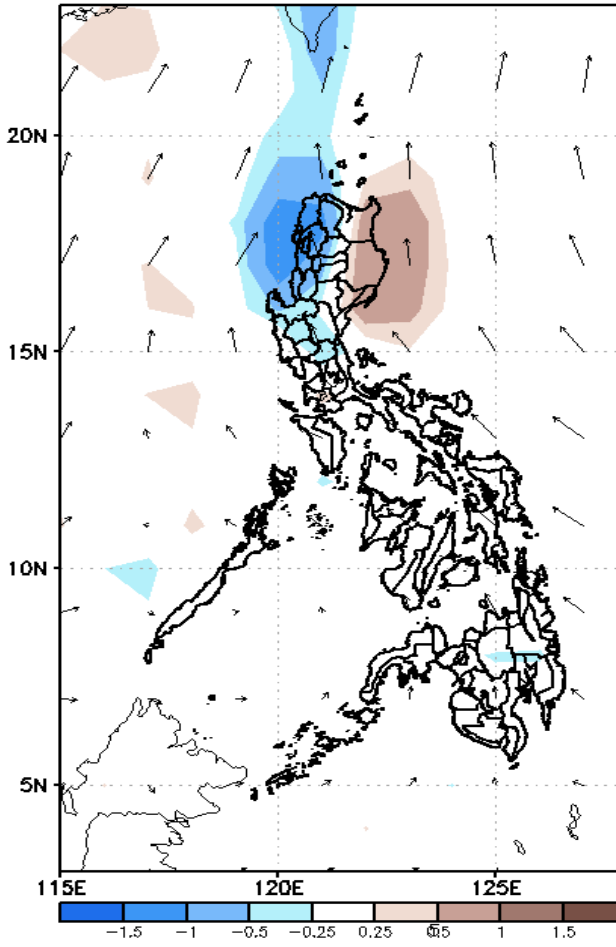
GEFS Week-2 Forecasts: Divergence & Wind Anomaly

Week 2: Nov 9-15, 2020

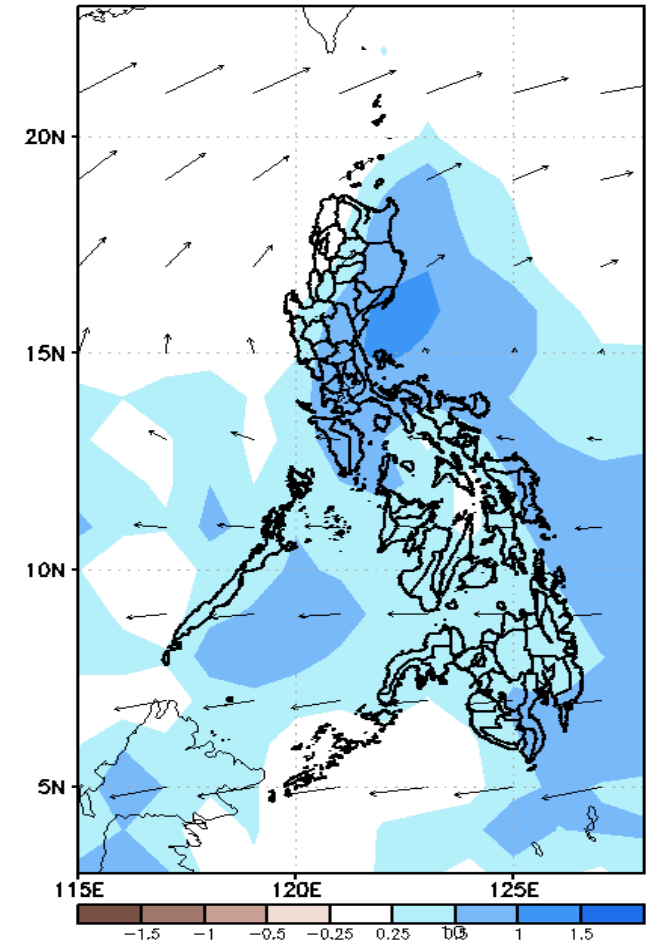
GEFS Week-2 850-hPa Divergence and Wind Anom
Valid: 20201109 - 20201115



GEFS Week-2 700-hPa Divergence and Wind Anom
Valid: 20201109 - 20201115



GEFS week-2 200-hPa Divergence and Wind Anom
Valid: 20201109 - 20201115

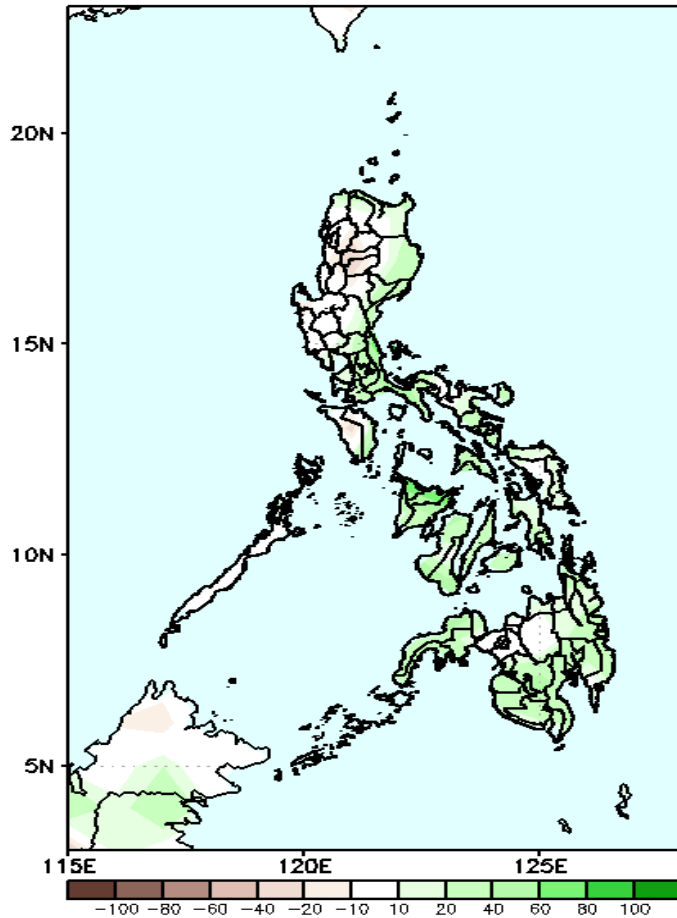


Upper level (200hPa) Divergence suggest likelihood of precipitation in most parts of the country during the forecast period. Westerly to southwesterly windflow affecting western parts of the country while easterlies affecting most parts of country during the forecast period.

Precipitation Anomaly and Exceedance Probability > 25/50 mm

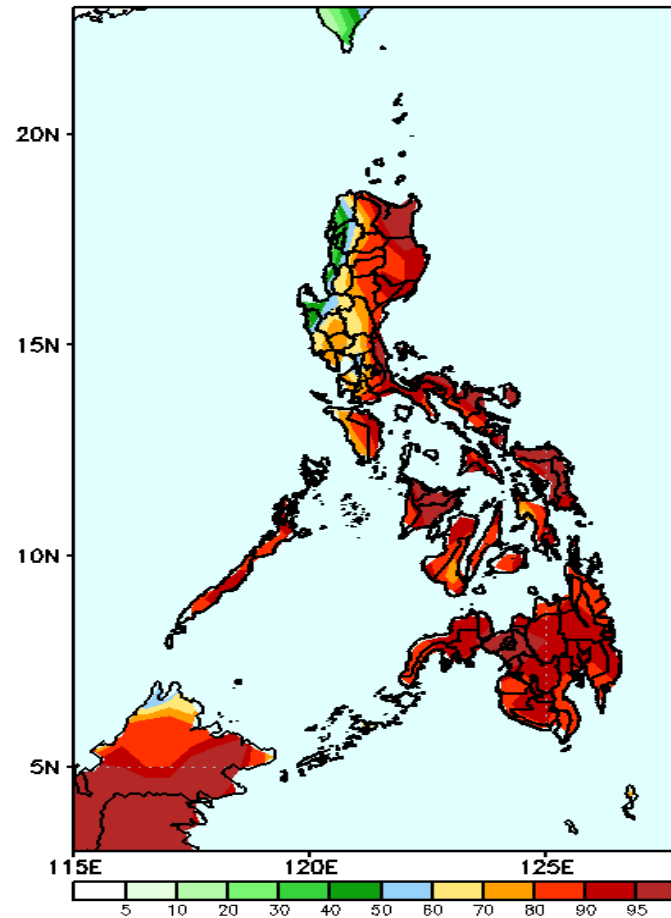
Week 2: Nov 9-15, 2020

GEFS Week-2 Precip Anomaly
Valid: 20201109 - 20201115



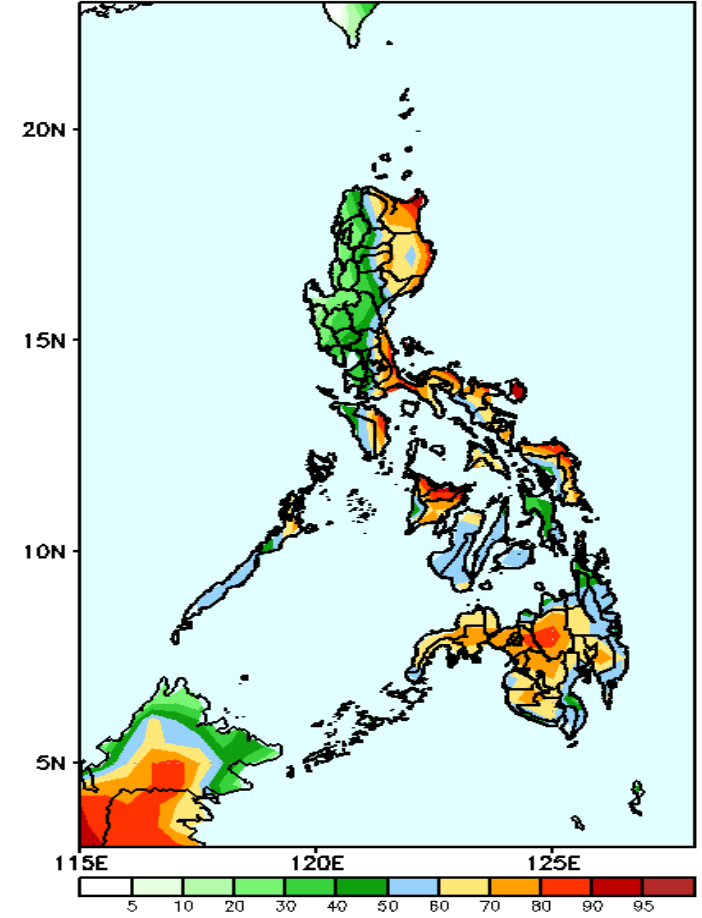
Increase of rainfall of up to 40mm in eastern Luzon, western Visayas and southern Mindanao is expected during the forecast period.

GEFS Week-2 Exceedance Prob. > 25mm
Valid: 20201109 - 20201115



High probability of rainfall to exceed 25mm in most parts of the country is expected during the forecast period.

GEFS Week-2 Exceedance Prob. > 50mm
Valid: 20201109 - 20201115

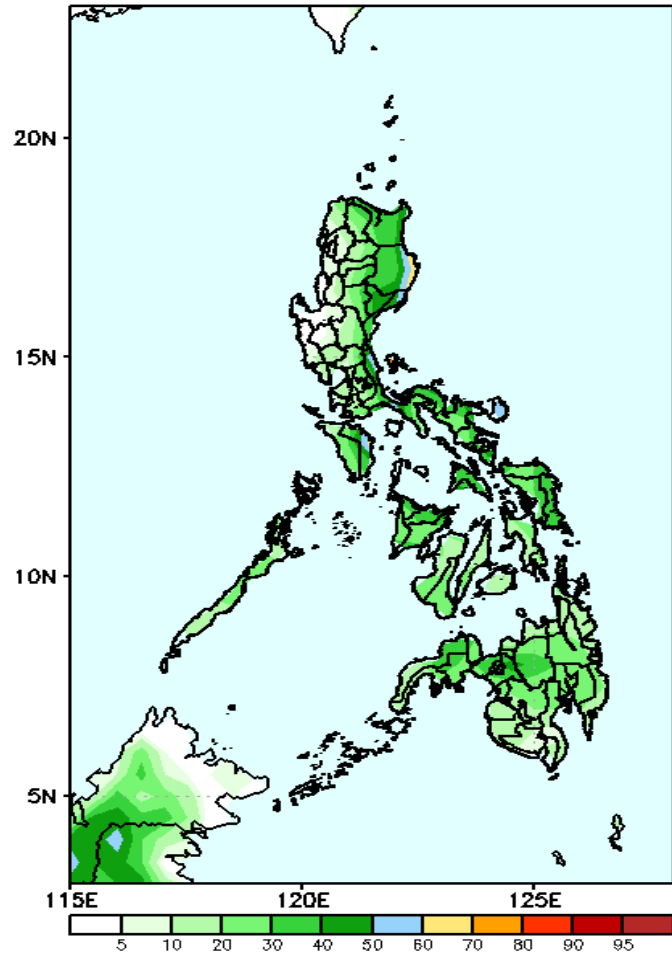


High probability of rainfall to exceed 50mm in most parts of eastern Luzon, Bicol Region and in most parts of Visayas and Mindanao during the forecast period.

Exceedance Probability > 100/150/200 mm

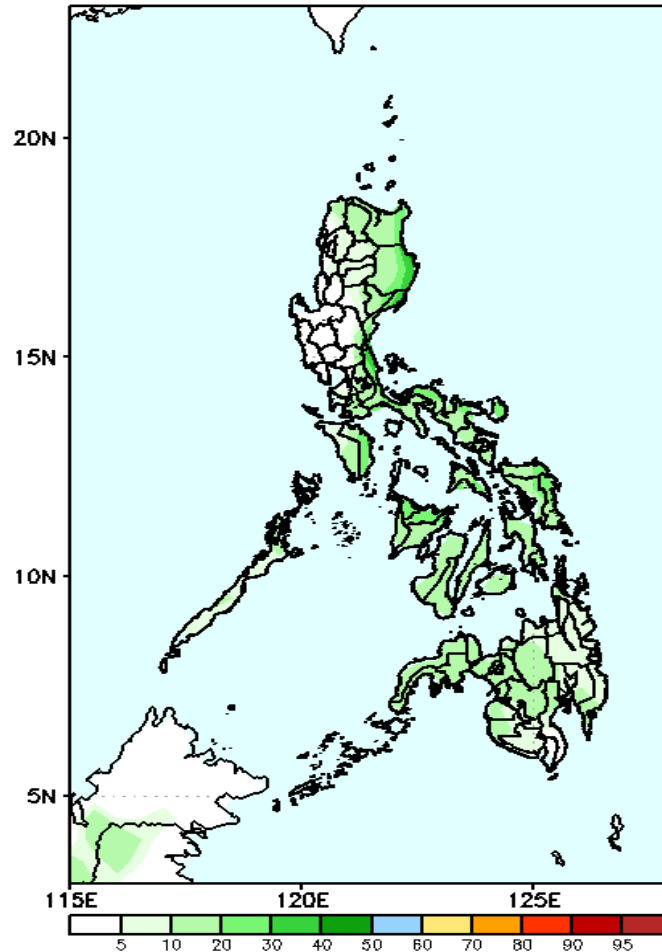
Week 2: Nov 9-15, 2020

GEFS Week-2 Exceedance Prob. > 100mm
Valid: 20201109 - 20201115



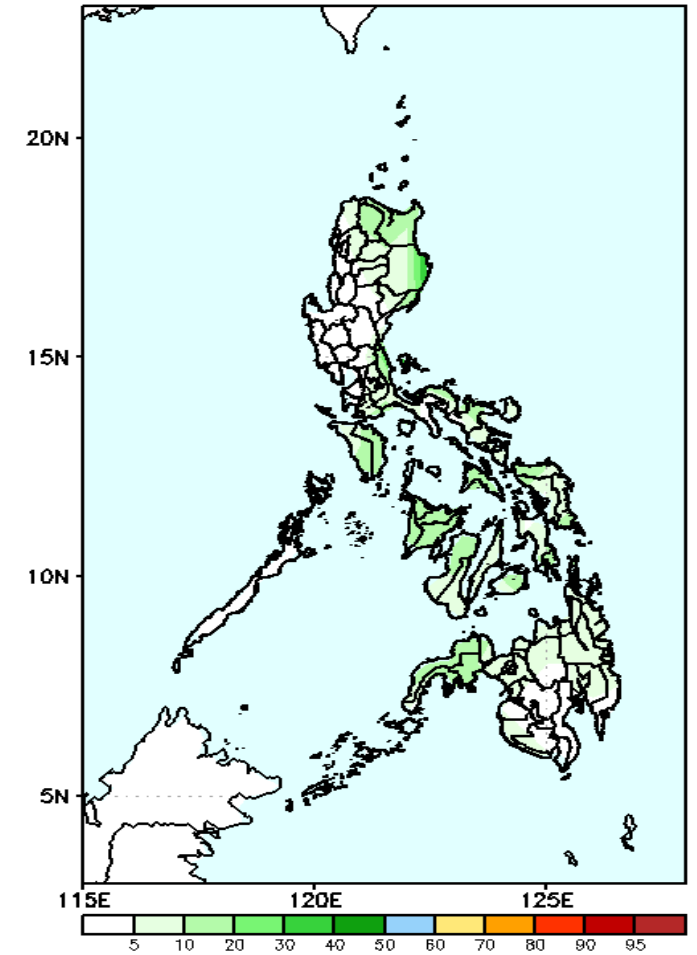
Less probability of rainfall to exceed 100mm in most parts of the country during the forecast period.

GEFS Week-2 Exceedance Prob. > 150mm
Valid: 20201109 - 20201115



Less probability of rainfall to exceed 150mm in most parts of the country during the forecast period.

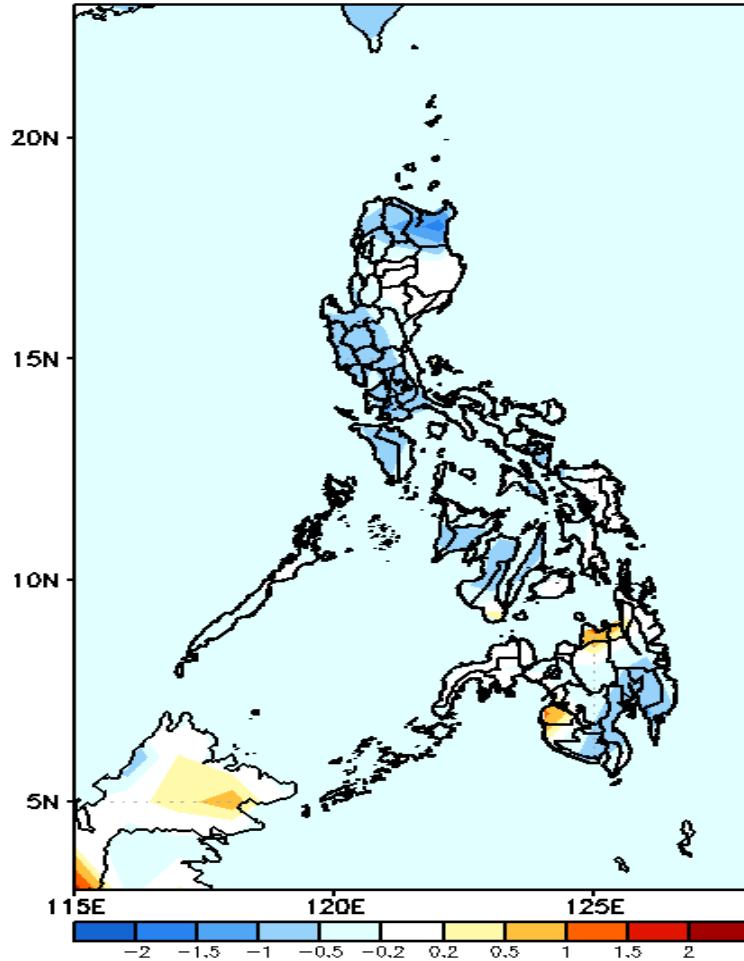
GEFS Week-2 Exceedance Prob. > 200mm
Valid: 20201109 - 20201115



Less probability of rainfall to exceed 200mm in most parts of the country during the forecast period.

GEFS Week-1 & 2 Forecasts: T2m Anomaly

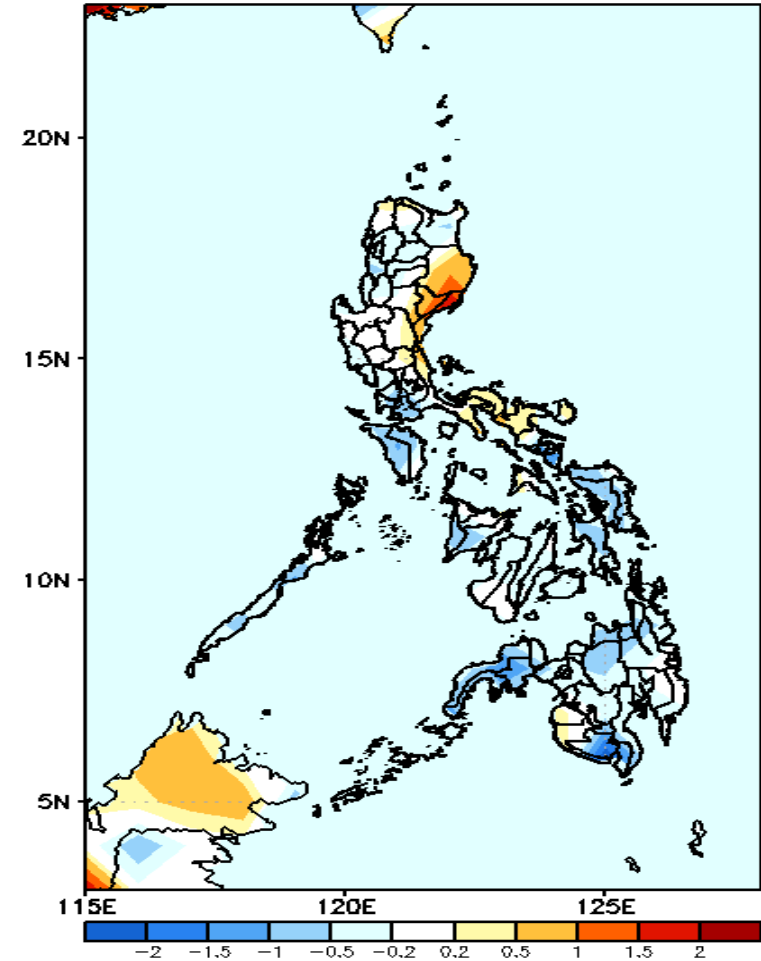
GEFS Week-1 T2m Anomaly
Valid: 20201102 - 20201108



2m Temperature Week 1: Nov 2-8, 2020

Slightly cooler to cooler than average surface air temperature is expected in northern and southwestern parts of Luzon while average to slightly warmer temperature will likely experience for the rest of the country.

GEFS Week-2 T2m Anomaly
Valid: 20201109 - 20201115



2m Temperature Week 2: Nov 9-15, 2020

Slightly cooler to cooler than average surface air temperature is expected in most parts of the country except in Isabela, Quirino and Bicol Region where slightly warmer to warmer average temperature will likely experience.

